



CATALOG NUMBER

TYPE

NOTES

# ST

## Standard 4' Wide Strip Light with T8 Lamps

### Product Description

Standard 4" wide industrial strip light fixtures.

### Housing

Die-formed heavy gauge steel housing with high gloss white powder coat finish. Fixture is shipped fully wired and assembled. Ample knock-outs are provided.

### Electrical

Fully wired electronic ballast, 50/60hz with either dedicated 120V (MPF) or "universal" voltage 120/277V (HPF). UL and CUL listed, damp location.

### Mounting

Surface, chain or pendant mount, individual or in continuous rows.

### Ordering Information

#### 120V (MPF)

**ST 232SV\*** - 4" x 48" Strip light w/2-32 T8 lamps, 120V ballast

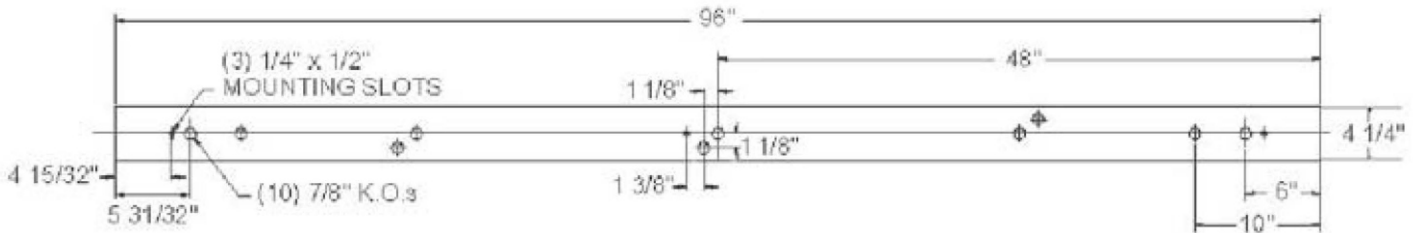
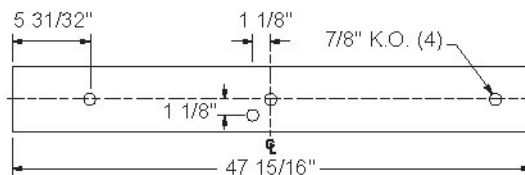
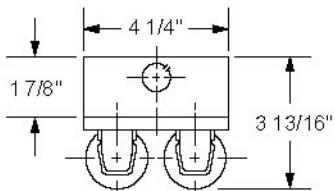
(\*Energy Star approved when used with 10,000hr lamps)

**ST 432SV** - 4" x 96" Strip light w/4-32 T8 lamps in tandem, 120V ballast

#### Universal 120/277V (HPF)

**ST 232DV** - 4" x 48" Strip light w/2-32 T8 lamps, 120/277V ballast

**ST 432DV** - 4" x 96" Strip light w/4-32 T8 lamps in tandem, 120/277V ballast



Montclair, Ca. 91763 USA  
 Tel: (909) 627-5333 Fax: (909) 627-2887  
 www.archipelagolighting.com