



CATALOG NUMBER

TYPE

NOTES

NWR & WR

Standard Rectangular Wraparound with T8 Lamps

Product Description

Standard rectangular wraparound fixtures.

Housing

Die-formed heavy gauge steel housing with high gloss white powder coat finish. Fixture is shipped fully wired and assembled. Ample knock-outs are provided.

Shielding

Low profile, acrylic, prismatic lens with linear prism sides. Lens can hinge from either side of fixture for ease in maintenance.

Electrical

Fully wired electronic ballast, 50/60hz with either dedicated 120V (MPF) or "universal" voltage 120/277V (HPF). UL and CUL listed, damp location.

Mounting

Surface, chain or pendant mount, individual or in continuous rows.

Ordering Information

120V (MPF)

NWR232SV - 6-1/2" x 48" Wraparound 2-32W T8 lamps, 120V ballast

WR 232SV* - 9" x 48" Wraparound 2-32W T8 lamps, 120V ballast

(*Energy Star approved when used with 10,000hr lamps)

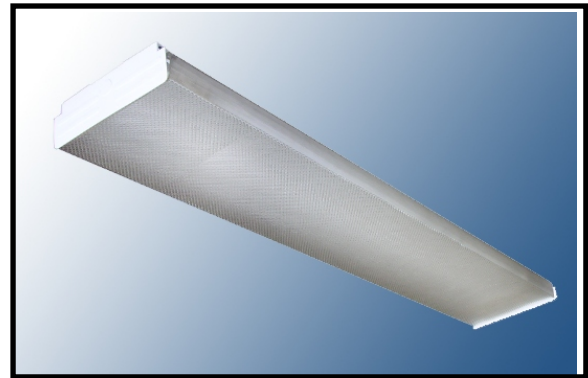
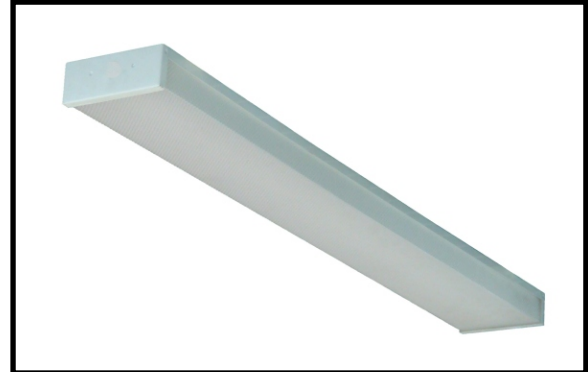
WR 432SV - 15" x 48" Wraparound 4-32W T8 lamps, 120V ballast

Universal 120/277V (HPF)

NWR232SV - 6-1/2" x 48" Wraparound 2-32W T8 lamps, 120/277V ballast

WR 232DV - 9" x 48" Wraparound 2-32W T8 lamps, 120/277V ballast

WR 432DV - 15" x 48" Wraparound 4-32W T8 lamps, 120/277V ballast



Montclair, Ca. 91763 USA
Tel: (909) 627-5333 Fax: (909) 627-2887
www.archipelagolighting.com