

HBT

HiBay T5 & T8 Fixtures

Product Description

14" and 21" T5 and T8 HiBay fixtures for cost effective lighting of medium bay and high bay warehouses, manufacturing plants and retail space applications.

Housing

Die-formed heavy gauge steel housing with high gloss white powder coat finish. Quick wire access included.

Electrical

Fully wired electronic ballast, 50/60hz, "universal" voltage 120/277V (HPF). UL and CUL listed.

Mounting

Surface, Chain or pendant mount, individual or in continuous rows.

Ordering Information

Universal 120/277V (HPF)

HBT5 446 - 14" wide HiBay w/4-54W T5 lamps

HBT5 646 - 21" wide HiBay w/6-54W T5 lamps

HBT8 432 - 14" wide HiBay w/4-32W T8 lamps

HBT8 632 - 21" wide HiBay w/6-32W T8 lamps

Options

HBDF 4LP - 14" wide Door Frame with clear polycarbonate lens

HBDF 6LP - 21" wide Door Frame with clear polycarbonate lens

HBWG 4LP - 14" wide Wire Guard

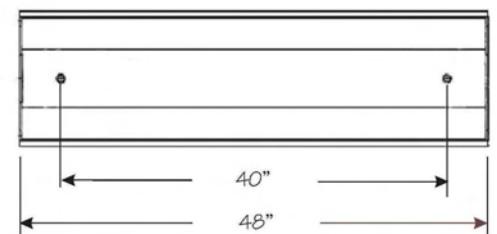
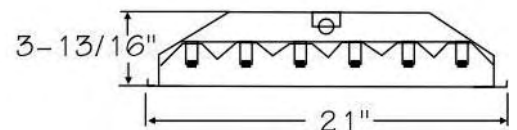
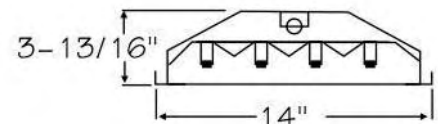
HBWG 6LP - 21" wide Wire Guard

Other Options

Contact Customer Service:

Occupancy Sensor

Emergency



4-Lamp T5 Hi-Bay With Open Face

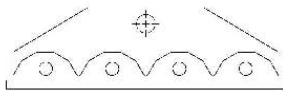
14 X 48 High Bay
Luminaire With Specular Reflector, No Wire Grid
4 54W T5 H.O. Lamps (F54/T5HO/835)

Zonal Cavity Coefficients of Utilization

Ceiling		.80				.70				.50			.30			.10			.0
Wall		.70	.50	.30	.10	.70	.50	.30	.10	.50	.30	.10	.50	.30	.10	.50	.30	.10	.00
RCP	0	1.17	1.17	1.17	1.17	1.15	1.15	1.15	1.15	1.10	1.10	1.10	1.05	1.05	1.05	1.01	1.01	1.01	.99
	1	1.09	1.05	1.02	.99	1.07	1.03	1.00	.97	.99	.96	.94	.95	.93	.91	.92	.90	.88	.87
	2	1.01	.94	.88	.83	.99	.92	.87	.82	.89	.84	.81	.86	.82	.79	.83	.80	.77	.75
	3	.93	.84	.77	.72	.91	.83	.76	.71	.80	.75	.70	.77	.73	.69	.75	.71	.68	.66
	4	.86	.76	.68	.62	.84	.74	.67	.62	.72	.66	.61	.70	.64	.60	.68	.63	.59	.57
	5	.79	.68	.60	.54	.77	.67	.59	.53	.65	.58	.53	.63	.57	.52	.61	.56	.52	.50
	6	.73	.61	.53	.47	.71	.60	.52	.47	.58	.52	.46	.57	.51	.46	.55	.50	.46	.44
	7	.68	.55	.47	.41	.66	.54	.47	.41	.53	.46	.41	.52	.45	.41	.50	.45	.40	.39
	8	.62	.50	.42	.36	.61	.49	.41	.36	.48	.41	.36	.47	.40	.36	.45	.40	.35	.34
	9	.58	.45	.37	.32	.56	.44	.37	.31	.43	.36	.31	.42	.36	.31	.41	.35	.31	.29
	10	.53	.41	.33	.28	.52	.40	.33	.28	.39	.32	.28	.38	.32	.28	.37	.32	.28	.26

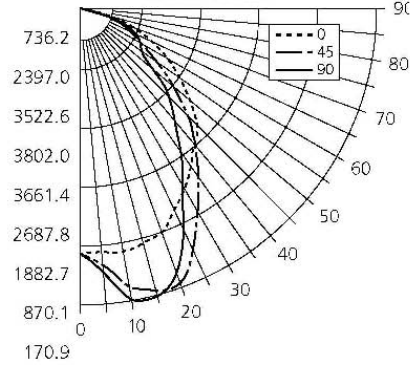
Lumen Summary

Zone	Lumens	% Lamp	% Fixt
0-30	6656	33.3	33.7
0-40	10458	52.3	53.0
0-60	16807	84.0	85.2
0-90	19731	98.7	100.0
90-120	0	0.0	0.0
90-130	0	0.0	0.0
90-150	0	0.0	0.0
90-180	0	0.0	0.0
0-180	19731	98.7	100.0



End view showing reflector configuration and placement of lamps.

Zonal Lumens



IES Spacing Criteria

End = 1.3	Diagonal = 1.3	Cross = 1.2
-----------	----------------	-------------

6-Lamp T8 Hi-Bay With Open Face

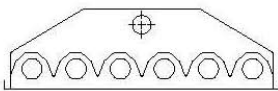
21 X 48 T8 High Bay
Luminaire With Specular Reflector, No Wire Grid
6 32W T8 Lamps (F32/T8)

Zonal Cavity Coefficients of Utilization

Ceiling		.80				.70				.50			.30			.10			.0
Wall		.70	.50	.30	.10	.70	.50	.30	.10	.50	.30	.10	.50	.30	.10	.50	.30	.10	.00
RCP	0	1.16	1.16	1.16	1.16	1.13	1.13	1.13	1.13	1.08	1.08	1.08	1.03	1.03	1.03	.99	.99	.99	.97
	1	1.07	1.02	.99	.95	1.04	1.00	.97	.94	.96	.93	.91	.92	.90	.88	.89	.87	.85	.83
	2	.98	.90	.84	.79	.95	.89	.83	.78	.85	.80	.76	.82	.78	.75	.79	.76	.73	.71
	3	.90	.80	.73	.67	.88	.79	.72	.66	.76	.70	.65	.73	.68	.64	.71	.67	.63	.61
	4	.83	.72	.63	.57	.80	.70	.63	.57	.68	.61	.56	.66	.60	.55	.64	.59	.55	.53
	5	.76	.63	.55	.49	.74	.62	.54	.49	.60	.53	.48	.58	.52	.48	.57	.51	.47	.45
	6	.70	.57	.49	.42	.68	.56	.48	.42	.54	.47	.42	.53	.46	.42	.51	.46	.41	.39
	7	.64	.51	.43	.37	.62	.50	.43	.37	.49	.42	.37	.48	.41	.36	.46	.40	.36	.34
	8	.59	.46	.38	.32	.58	.45	.37	.32	.44	.37	.32	.43	.36	.32	.42	.36	.31	.30
	9	.54	.41	.33	.28	.53	.41	.33	.28	.39	.32	.28	.38	.32	.27	.37	.32	.27	.25
	10	.50	.37	.30	.25	.49	.37	.30	.25	.36	.29	.24	.35	.29	.24	.34	.28	.24	.22

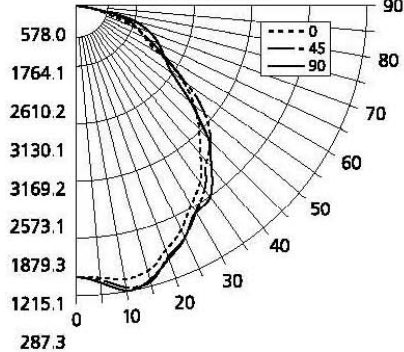
Lumen Summary

Zone	Lumens	% Lamp	% Fixt
0-30	4952	28.0	28.8
0-40	8082	45.7	47.0
0-60	13825	78.1	80.3
0-90	17206	97.2	100.0
90-120	0	0.0	0.0
90-130	0	0.0	0.0
90-150	0	0.0	0.0
90-180	0	0.0	0.0
0-180	17206	97.2	100.0



End view showing reflector configuration and placement of lamps.

Zonal Lumens



IES Spacing Criteria

End = 1.3	Diagonal = 1.3	Cross = 1.3
-----------	----------------	-------------